



**Pétanque**  
**ENGLAND**

**Competition Rules 2025**  
National Events

# Competition Rules 2025

## National Events

### 1. GENERAL

- 1.1 These Rules, apply to competitions organised under the auspices of Pétanque England (PE). Where the term “national” is used in these rules it refers to England.
- 1.2 Note: The Inter-Regional Championship and Challenge Tournament, PE Club Team Tournament, the Champion of Champions (Doubles, Triples and Veterans), IWD Doubles, Home Nations Qualification, Junior and Espoirs Qualification will be conducted in accordance with the published rules issued specifically for each event..
- 1.3 The number, dates, venues and format of the events will be determined by the PE Events Group and published, with a copy of these rules, in advance of the event.
- 1.4 The Events Group will be responsible for organising the competitions and will appoint one or more Organisers for each event.
- 1.5 The Umpiring Commission Executive will appoint one or more qualified umpires, to be responsible for the application and interpretation of these rules and the Official Rules for the Sport of Pétanque.
- 1.6 The Umpire, in consultation with the Organiser will, if necessary, appoint a Jury for the competition. This jury will be composed of a minimum of 3 (maximum 5) PE members, who are not directly involved in the issue to be resolved.
- 1.7 Any case not provided for in these competition rules or in the Official Rules for the Sport of Pétanque must be submitted to the umpire who may refer it to the competition’s jury.
- 1.8 Any event may be cancelled at the discretion of the PE Board.

### 2. ELIGIBILITY

- 2.1 Only PE members with a valid PE licence are eligible to compete, unless specifically stated on the events registration form.
- 2.2 Players registering for ranking events and international squad selection, to represent PE at a Confédération Européenne de Pétanque (CEP) or Fédération Internationale de Pétanque et Jeu Provençal (FIPJP) championship, must be eligible to represent England under the relevant CEP or FIPJP championship rules. They must also hold a valid UK passport at the time of selection, be able to travel as required and be available to play.
- 2.3 Players may be required to provide proof of eligibility, including age and nationality, to PE at any time. Further information regarding these eligibility rules may be obtained from the Events Group Chairperson .
- 2.4 Players participating in the Men’s events must be male or identify as male.
- 2.5 Players participating in the Women’s events must be female or identify as female.
- 2.6 Players participating in the Mixed player events must be, or identify as, different genders.
- 2.7 Players participating in the Mixed Triples Championship must include one player of a different gender to the other two.
- 2.8 Players participating in the Veterans events must be aged 55 years of age or older in the year of the event.
- 2.9 Players participating in the Espoirs events must be adult licence holders under the age of 23 years in the year of the event.
- 2.10 Players participating in the Junior events must be aged 17 years or younger in the year of the event.
- 2.11 Teams of 3 or 4 players can compete in the National Triple Events, but all players on a team must compete in each qualifying event to qualify.
- 2.12 Teams of 4 players participating in a National Triples events, may change one player during a game, but only the once and then only between two ends, before the jack has been thrown and after informing the opposing team. The change of a player must be recorded on the scorecard for that game.
- 2.13 Any player who is in debt to PE for a period of 6 months or more will not be permitted to enter a competition.

### **3. ENTRIES**

- 3.1 National competitions can only be entered in advance.
- 3.2 Entry forms must be completed with the team's contact details and include all the names and PE licence numbers of all team players.
- 3.3 Entries and payments can only be made via your membership account on the PE Website membership portal. The closing date for entries is 10pm on the Monday before the event.
- 3.4 At all National Title Championships, teams will be given a number by which they will be known throughout the competition or series.
- 3.5 Cancellation of an entry is permitted and the entry fee will be refunded if the cancellation is made before the closing date of the competition published entry deadline.
- 3.6 Changes to a team's players are permitted at any time up to the close of registration for the competition, subject to Article 2. Eligibility.
- 3.7 PE reserves the right to refuse entry to any of its competitions.

### **4. REGISTRATION and DRAW**

- 4.1 Registration will open by 8:30 am and closes promptly at 9 am (unless announced otherwise, at least 48 hours, before the event).
- 4.2 The draw will be overseen by an umpire and may be made online prior to the event.
- 4.3 Play will commence as soon as possible after any necessary announcements have been made.

### **5. FINANCIAL**

- 5.1 Entry fee per event: For International Qualifiers (excluding Home Nations): Adults - £10 each, Juniors - Free. All other events: Adults - £15 each, Juniors - Free. The Adult/Junior event is free for all players..
- 5.2 The entry fees for the Home Nations Qualifier, less the costs of organising the competition, will be divided equally between the top 8 teams, to be used towards their travel, kit and accommodation costs.
- 5.3 The prize fund for winning a championship title is 80% of the competition entry fee divided over all levels of the competition.
- 5.4 There will be no prizes for ranking or qualifying events, (entry fees, less organisation and kit costs will be used to support the international squads).
- 5.5 There is no entry fee for the Champion of Champions and Junior only events, therefore no prize fund or prizes will be awarded.
- 5.6 All competition prizes will be paid to each individual player via electronic banking. It is the responsibility of the players to provide their bank account details to the PE Treasurer so that prize money can be distributed.
- 5.7 All national title winners will be presented with a National Title shirt.

### **6. COMPETITION ORGANISATION**

- 6.1 The format for each event will be Swiss, followed by a seeded knock-out however, the event organiser, after consultation with the umpire and subject to the number of entries, has the right to alter the format of play, which may include timed games.
- 6.2 Timed games may be organised for national events, in which case the following specific rules will apply:  
All games are played on defined lanes, the lines defining each lane are considered as "dead ball lines", therefore if the jack or a boule crosses a line defining a lane it is considered dead (out of play).

The time limit for each game will be:

- Triples: 75 minutes
- Doubles: 60 minutes
- Singles: 45 minutes

In each format at the end of the time limit the current end should be completed plus two more ends.

6.3 In the case of equal scores after the two additional ends, the teams will play one “extra” end. During this extra end, the jack cannot become dead (out of play). If the jack goes out of the defined playing area it will be put back in its original marked position.

Teams will be notified when the time limit has expired.

6.4 A lunch break may be taken at the discretion of the umpire and the organiser. In this case, the umpire will blow a whistle to start the break, which will last for approximately 30 minutes.

The end in progress must be completed, and no players are allowed on the terrain during this break. The umpire will blow a whistle to indicate the re-start of play.

6.5 If the competition is disrupted by teams or players being absent on the day or leaving before completing all their games, the individuals concerned will be reported by the umpire or organiser to the PE Events Group, and may be refused entry to future PE events.

A jury may be called to determine any appropriate changes to the competition format as a result of a team’s absence.

## **7. TEAM CLOTHING**

7.1 Players must wear clothing which is clean, designed and worn so as not to be objectionable or cause offence.

7.2 The players of a team must wear matching team kit, tops (jackets, shirts etc.) and trousers, skirts or shorts of the same colour (the length may not be shorter than the player’s fingertips when the arms and fingers are extended at the player’s side).

7.3 The tops, with at least short sleeves, must be identical so that all the players in a team can be easily identified as belonging to that team.

7.4 Jeans may be worn but they must be identical in colour and not torn. For further clarification on team kit please refer to the attached appendix.

7.5 In the event of wet weather, waterproof tops and bottoms can be worn and do not need to match.

7.6 Teams must remain in matching kit throughout the day, any team failing to comply with the dress code will be fined £20 per player and excluded from further participation in the event.

## **8. DISCIPLINE**

8.1 Players must produce their licence when requested by an umpire, failure to provide a valid licence (paper or digital) to the umpire will result in the player being disqualified.

8.2 Should a player or team breach any of the published rules and regulations, the umpire will inform the Umpiring Commission Executive who in turn may refer the incident to PE.

8.3 PE reserves the right to exclude from an event any member whose conduct is in breach of one or more of the published rules and regulations or which, in the opinion of the umpire, is sufficiently serious to constitute an act of misconduct.

8.4 The consumption of alcohol or smoking (including electronic smoking or nicotine devices) by participants is restricted to designated areas and is prohibited during play.

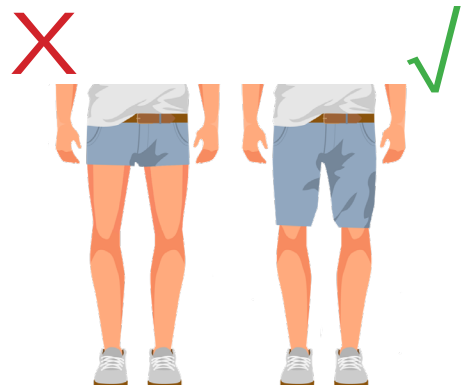
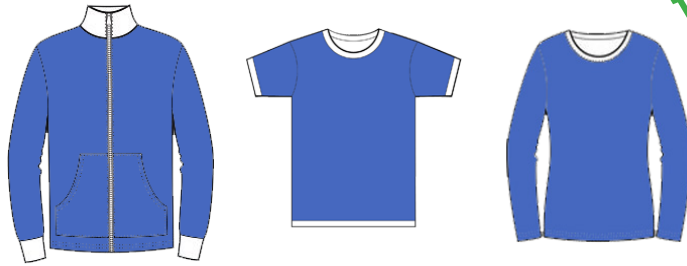
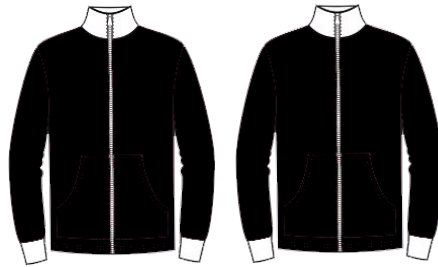
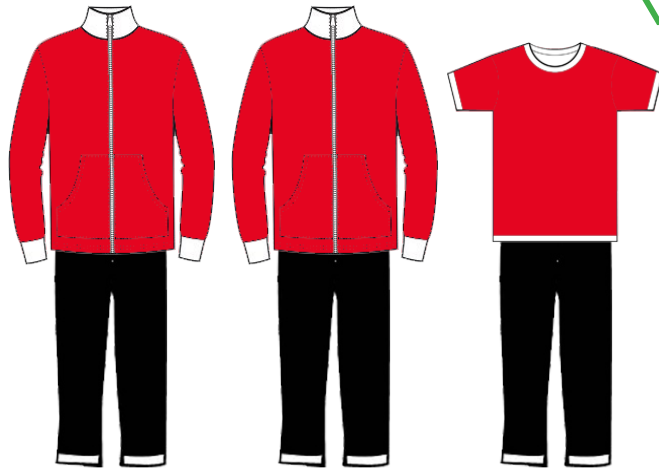
8.5 Mobile phones must be switched off or to silent mode during play.

8.6 Events held at commercial venues, such as pubs and sports clubs, may only allow the consumption of food and drink purchased at the venue.

All players are to respect this and abide by the rules of the venue or face immediate disqualification from the event.

8.7 Photography and videography must be carried out in accordance with the PE Safeguarding Practice and Procedure, which is published on the PE website.

APPENDIX 1  
Article 7





[www.petanque-england.uk](http://www.petanque-england.uk)