



Pétanque
ENGLAND

Competition Rules 2022
National Events

Competition Rules 2022

National Events

1. GENERAL

- 1.1 These Rules, apply to competitions held under the auspices of Pétanque England (PE). Where the term “national” is used in these rules it applies to England.
- 1.2 Regulations for play shall be the “Official Rules for the Sport of Pétanque” and any variations set out in these “Competition Rules” which complement them.
Note: The Inter-Regional Championship and Challenge Tournament, PE Club Team Tournament, Champion of Champions (Doubles, Triples and Veterans) and Home Nations Qualification will be conducted under the published rules issued specifically for each event.
- 1.3 The number, dates, venues and format of the events will be determined by the PE Events Group and published, with a copy of these rules, in advance of the event.
- 1.4 The Events Group will be responsible for the organisation of the competitions and will appoint an Organiser or Organisers for each event.
- 1.5 The Umpiring Commission Executive will appoint a qualified Umpire or Umpires, who will be responsible for the application and interpretation of these rules and the Official Rules for the Sport of Pétanque.
- 1.6 The Umpire, in consultation with the Organiser will, if required, appoint a jury for the competition. This jury will consist of a minimum of 3 PE members (maximum 5), who are not directly involved with the issue to be resolved.
- 1.7 Any case not provided for in these competition rules or the Official Rules for the Sport of Pétanque must be submitted to the umpire who may refer it to the competition’s jury.
- 1.8 Any event may be cancelled at the discretion of the PE Board.

2. ELIGIBILITY

- 2.1 Only PE members holding a valid PE licence are eligible to compete, unless specifically stated in the events registration form.
- 2.2 Players competing in ranking events, and international squad selection, to represent PE at a Confédération Européenne de Pétanque (CEP) or Fédération Internationale de Pétanque et Jeu Provençal (FIPJP) championships, must be eligible to represent England in accordance with the relevant CEP or FIPJP Championship rules. They must hold a valid UK passport at the time of selection, be able to travel when required, and be available to play.
- 2.3 Players may be required to produce evidence of eligibility, including age and nationality, to PE at any time. Further information concerning these eligibility rules may be obtained from the Chair of the Events Group.
- 2.4 Players entering the Men’s National Singles, Doubles and Triples Championship must be male or identify as male.
- 2.5 Players entering the Women’s National Singles, Doubles and Triples Championship must be female or identify as female.
- 2.6 Players entering the Mixed Doubles Championship must be different genders.
- 2.7 Players entering the Mixed Triples Championship must include one player of a different gender to the other two.
- 2.8 Players entering the Veterans Doubles Championship must be aged 55 years or above in the year of the event.
- 2.9 Players entering Espoirs events must be adult licence holders under the age of 23 years in the year of the event.
- 2.10 Players entering Junior events must be aged 17 years or younger in the year of the event.
- 2.11 In events allowing triples teams to consist of four players, a team is permitted to change one player during a game, but only the once and then only between two ends after informing the opposing team. The change of a player must be recorded on the scorecard for that game. No additional player to a team will be allowed after registration has closed.

3. ENTRIES

- 3.1 National competitions can only be entered in advance.
- 3.2 Entry forms must be completed with the team's contact details and all team player's names and PE licence numbers must be included.
- 3.3 Entries and payment can only be made via your membership account on the PE Website membership portal available via: <https://www.petanque-england.uk/member/>. The deadline for entries is 10pm on the closing date.
- 3.4 At all National Title Championships, teams will be given a number by which they will be known throughout the competition or series.
- 3.5 Cancellation of an entry is permitted and the entry fee will be refunded if the cancellation takes place before the competition published entry deadline.
- 3.6 Changes to players in the team are permitted at any time up to the close of registration at the competition, subject to article 2. Eligibility.
- 3.7 PE retains the right to refuse entry into any of its competitions.

4. REGISTRATION and DRAW

- 4.1 Registration will open by 8.15 am and close promptly at 9 am (Unless announced otherwise, no later than 48 hours, before the event).
- 4.2 The draw, which will be overseen by an umpire, will be made online prior to the event.
- 4.3 Play will commence as soon as possible after the completion of any necessary announcements.

5. FINANCIAL

- 5.1 Entry fee per event: Adults - £15 each, Juniors - free.
- 5.2 The entry fees for the Home Nations Qualifier, less competition organisation costs, will be divided equally among the top 8 teams, to be used towards their travel, kit and accommodation costs.
- 5.3 The prize fund for winning any championship title will be 80% of the competition entry fees divided across all levels of the competition.
- 5.4 There will be no prizes for Ranking or Qualifier events, (entry fees, less organisational and kits costs will be used to support the international squads).
- 5.5 Participation in the Champion of Champions and Junior only events do not require an entry fee therefore, there will be no prize fund or prizes awarded.
- 5.6 All competition prizes will be paid via electronic banking to each individual player. It is the responsibility of players to provide the details of their bank account to the PE Treasurer so that prize monies can be distributed.
- 5.7 All national title winners will be presented with a National Title shirt.

6. COMPETITION ORGANISATION

- 6.1 The format for each event is set by the Events Group however, the Organiser for the event, after consultation with the Umpire and subject to the number of entries, has the right to alter the format of play, which may include timed games.
- 6.2 Timed games may be organised for national events, in which case the following specific rules will apply:
All games are played on defined lanes, the lines defining each lane are considered as "dead ball lines", therefore if the jack or a boule crosses a line defining a lane it is considered dead (out of play).

The time limit for each game will be:

- Triples: 75 minutes
- Doubles: 60 minutes
- Singles: 45 minutes

In each format at the end of the time limit the current end should be completed plus two more ends.

- 6.3 In the case of equal scores after the two additional ends, the teams will play one “extra” end. During this extra end, the jack cannot become dead (out of play). If the jack goes out of the defined playing area it will be put back in its original marked position.
Teams will be notified when the time limit has expired.
- 6.4 A lunch break may be held at the discretion of the Umpire and Organiser. In this case, the Umpire will blow a whistle to start the break, which will be for approximately 30 minutes.
The end in progress must be completed, with no players allowed on the terrain during this break. The Umpire will blow a whistle to indicate the re-start of play.
- 6.5 Where the competition is disrupted by teams or players being absent on the day or leaving before completing all their games, the individuals concerned will be subject to a report by the umpire or organiser to the PE Events Group, and may be refused entry to future PE events.
A jury may be called to determine any appropriate change to the competition format as a result of a team(s) absence.

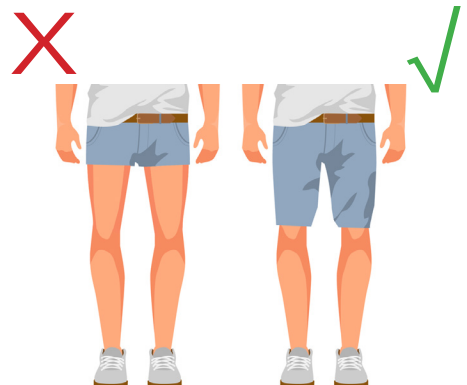
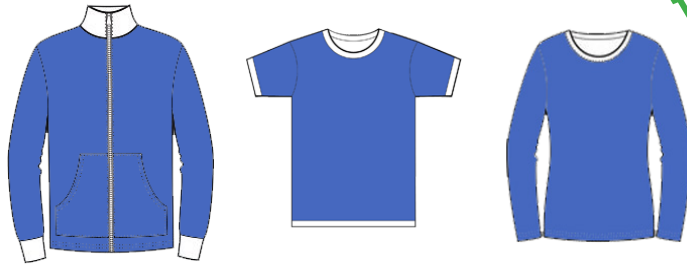
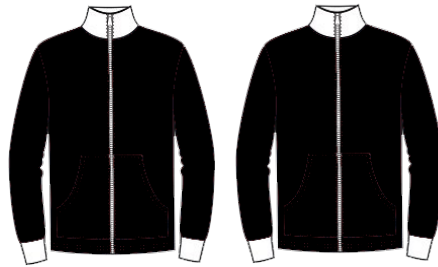
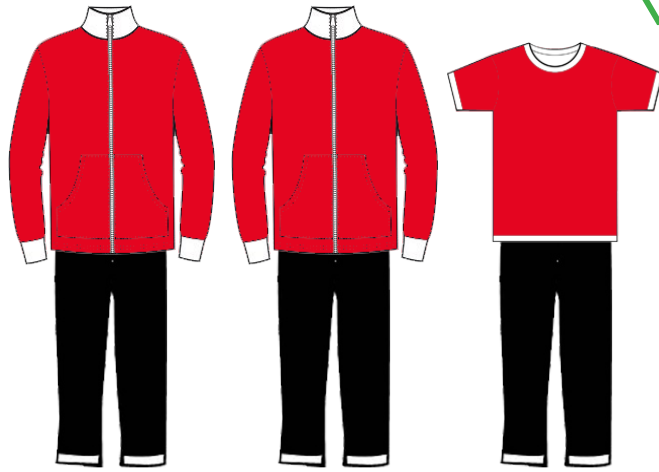
7. TEAM CLOTHING

- 7.1 Players must wear clothing which is clean, designed and worn so as not to be objectionable or cause offence.
- 7.2 The players of a team must wear matching team kit, tops (jackets, shirts etc.) and the same coloured trousers, skirts or shorts (the length may not be shorter than the player’s fingertips when the arms and fingers are extended at the player’s side).
- 7.3 The tops, with at least short sleeves, must be identical so all the players of a team can be easily identifiable as the team in question.
- 7.4 Jeans may be worn but they must be identical in colour and not ripped. For further clarification of team kit please see the attached appendix.
- 7.5 In the event of wet weather, waterproof tops and bottoms may be worn and will not need to be matching.
- 7.6 Teams must remain in matching kit all day, any team failing to comply with the standard of dress will be fined £20 per player and refused any further participation in the event.

8. DISCIPLINE

- 8.1 Players must produce their licence on demand by an umpire, failure to provide the umpire with a valid licence (paper or digital) will result in the player being disqualified.
- 8.2 Should a player or team violate the published Rules and Regulations, the Umpire will notify the Umpiring Commission Executive who in turn may refer the incident to PE.
- 8.3 PE reserves the right to exclude from an event any member whose conduct is in breach, or multiple breaches of the published rules and regulations or which an appointed umpire considers may be sufficiently serious to constitute an act of misconduct.
- 8.4 Drinking alcohol or smoking (including electronic smoking or nicotine devices) by participants is restricted to designated areas and forbidden during play.
- 8.5 Mobile phones must be turned off or switched to silent during play.
- 8.6 Events held at venues that are commercial, such as public houses and sports clubs, may only allow food and drink purchased at the venue to be consumed.
All players are to respect this and comply with venue regulations or may be subject to an immediate disqualification from the event.
- 8.7 Photography and videography needs to be conducted according to the constraints of the PE Safeguarding Practice and Procedure which is published on the PE Website.

APPENDIX 1
Article 7





www.petanque-england.uk